



PRIDE & PERSIST



Health Care for LGBTQ+ Youth



In our last newsletter, we briefly looked at what mental health care looks like for the LGBTQ+ community. In this edition, we'll dive deeper into availability and barriers to receiving care, as well as some resources within Washington County. The phrase 'health care' can mean a lot of

things, including physical care, mental health care, gender affirming care, and more. Key aspects of quality LGBTQ+ care include the use and respect of preferred pronouns, a welcoming environment with relevant pictures or brochures, and a provider that is well-versed in health problems experienced by this community, which we'll look at in our next edition.

Upcoming Events

Oct. 26:

LGBTQ+ Support Groups @
Moraine Park Tech College, West
Bend from 5-6:30 PM

Oct. 27:

Nightmares Around Elm Street @
Youth and Family Project, West
Bend, at 7:30, 7:45, 8:00 PM

Top Barriers to Care

1 Lack of Health Insurance

Members of the LGBTQ+ community are less likely to have health insurance and are more likely to be unhoused or unemployed

2 Negative Experiences

Many LGBTQ+ people experience discrimination or prejudice while receiving care, such as being misgendered or being refused care

3 Lack of Knowledge

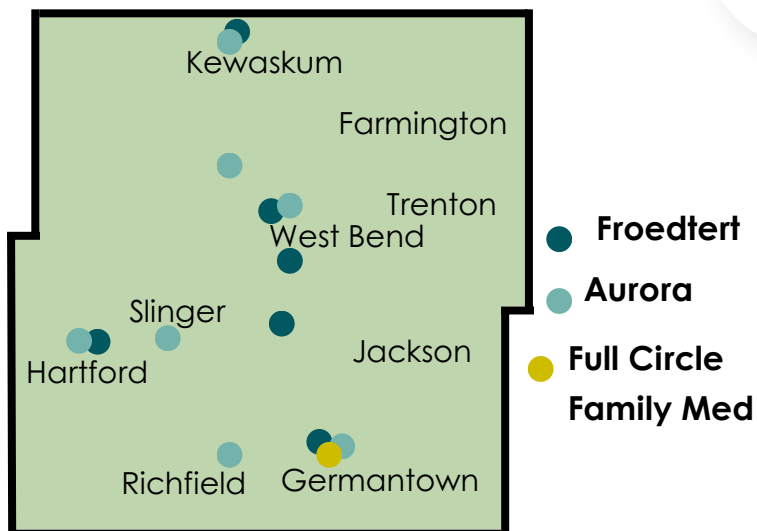
Some providers lack an understanding of key terms (gender, sexuality, biological sex) or don't understand specific population needs

Impacts of Not Receiving Quality Care

Discrimination or denial of service in healthcare leads to delayed or entirely neglected treatment. Depending on the health concern, this can lead to a slew of negative outcomes, including infection, transmission of diseases between people, and in severe cases, permanent damage or death. Routine visits and preventative testing are important aspects of an individual's health, which is why receiving quality care is essential.

Where You Can Find Care

Washington County

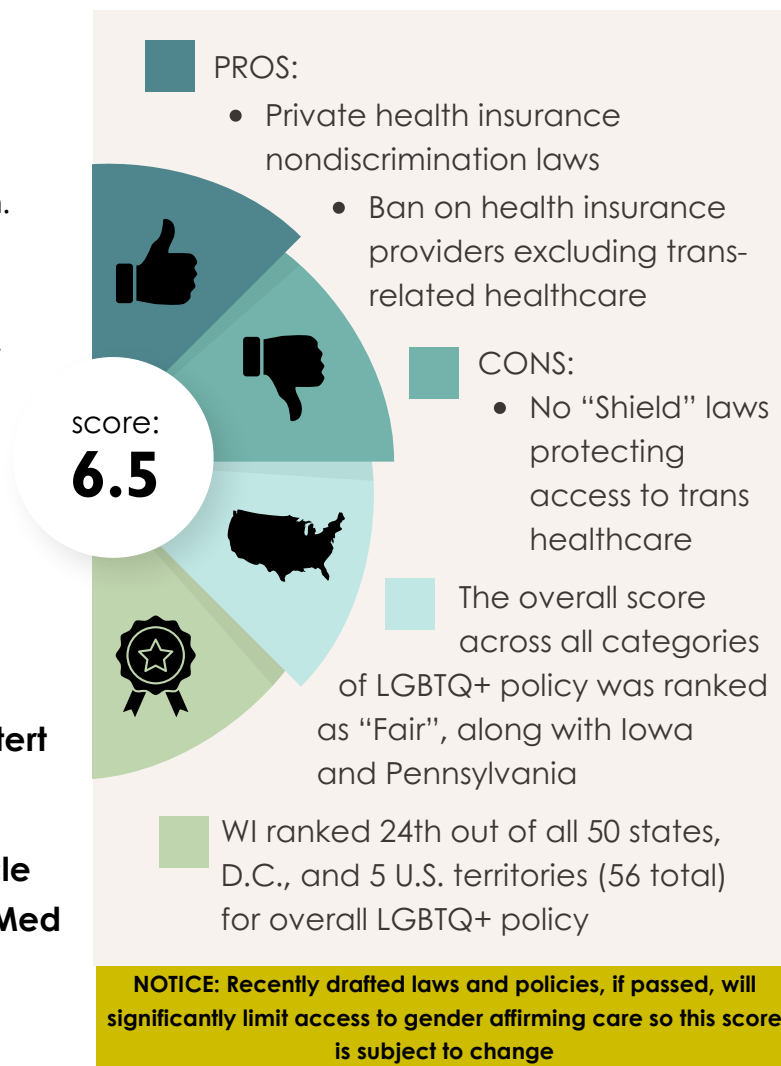


There are two health systems in Washington County, Wisconsin and one clinic that have dedicated efforts towards providing positive healthcare experiences to patients in the LGBTQ+ community; Froedtert & the Medical College of Wisconsin, Aurora Health Care, and Full Circle Family Medicine.

WI's LGBTQ+ Healthcare Laws & Policies Score

The Movement Advancement Project, also known as MAP, is a non-profit organization that provides information about each state's laws that limit equity and opportunity for all. A

list of criteria is used to score each state on a variety of areas, including relationship and parental recognition, religious exemption laws, and healthcare law. Let's take a closer look at Wisconsin's score:



With a 6.5 out of 7.5 possible points in the healthcare law category, Wisconsin does a pretty good job of protecting members of the LGBTQ+ community through medical legislation, but there are still areas that can be improved. It's important to vote and advocate for policies that protect LGBTQ+ healthcare.

Resources

- [Movement Advancement Project](#)
- [Healthcare Considerations for LGBTQ+ Youth](#)
- [LGBTQ+ Healthcare: Answers from Expert Paula Neira, J. D., M.S.N.](#)
- [LGBTQ+ Healthcare Directory](#)

NOTE: Links are clickable!